

FOUNDATIONS (NEW 2025)

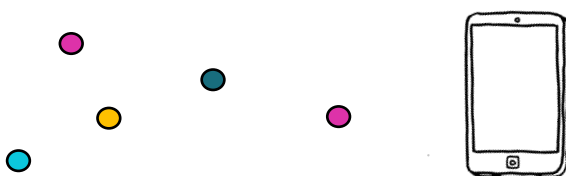


We invite you to view, share and embed

[Foundations](#) Module (57mins)

<https://vimeo.com/640800752>

OUR THANKS TO PEOPLE WHO SHARED LIVED EXPERIENCE
INSIGHTS TO INFORM SOCIAL, SERVICE AND SYSTEM
RESPONSES TO VIOLENCE AND ABUSE.



© 2025 Insight Exchange | Production with Reilly Baker & Mitchell Slade | Embedded animations developed with: Guy Downes | Original Ink Illustrations: Guy Downes.

Note: This Foundations module replaces previous Foundations & Foundations Applied modules (now archived).

The module is designed to build on understanding of and responses to domestic, family and sexualised violence.

Content Outline:

In the **Foundations** module we explore:

- Our Interactions - Our interactions always matter, and our dignity is always central.
- Our Responses - We cannot guess or assume when responding to violence and abuse.
- My ecosystem matters - Respond with *me* in the centre of my ecosystem.
- Follow My Meaning - Follow *me* in what my world means to me.

In between each, we will invite you to think about what you are noticing. We will also share with you some insights and responses from other responders.

We will also explore 'Our Actions' because how we uplift responses matters.

At the end of the module, we share two free (donated) materials you can use immediately, and many more.

<https://www.insightexchange.net/modules/>

