

## HOTELS LAB

[www.insightexchange.net/hotels-lab/](http://www.insightexchange.net/hotels-lab/)

In our listening we hear about these direct experiences of being at or relying on Hotels:

[Laura](#) was assaulted in the hotel room, [Dorothy](#) was reliant on the hotel to be able to get away discreetly and quickly with the children, [Gemma's](#) child was taken and taken to a hotel, [Ruby](#) was staying at a hotel the night before her wedding and concerned about marrying him. The refuge couldn't accommodate [Jessica](#) and her children so they were temporarily housed in a hotel, and [Mishka](#) was lured to a hotel and was held captive for nine hours.



## HOTELS LAB

The [Hotels Lab](#) is about understanding hotels as an important part of the ecosystem of responses to domestic, family and sexualised violence.

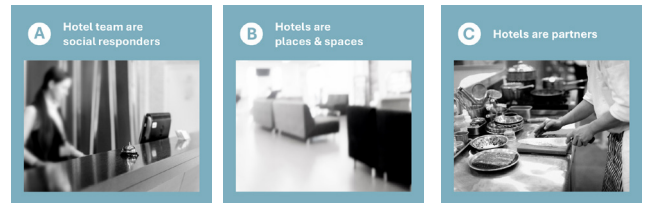
The Hotels Lab makes use of the free (donated) insights and materials in Insight Exchange. These can be used to build on Hotels understanding of and responses to violence and abuse.

We invite Hotel Associations, Hotel Groups and Independent Hotels to explore:

**(A) Hotel team are social responders.**

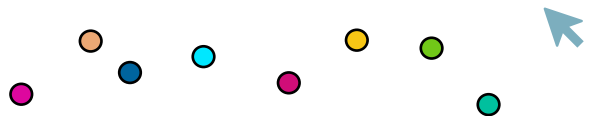
**(B) Hotels are places and spaces.**

**(C) Hotels are partners.**



Explore, use and share the 'Hotels Lab'

[www.insightexchange.net/hotels-lab/](http://www.insightexchange.net/hotels-lab/)



Our thanks to every person who contributed insights for the benefit of many.

