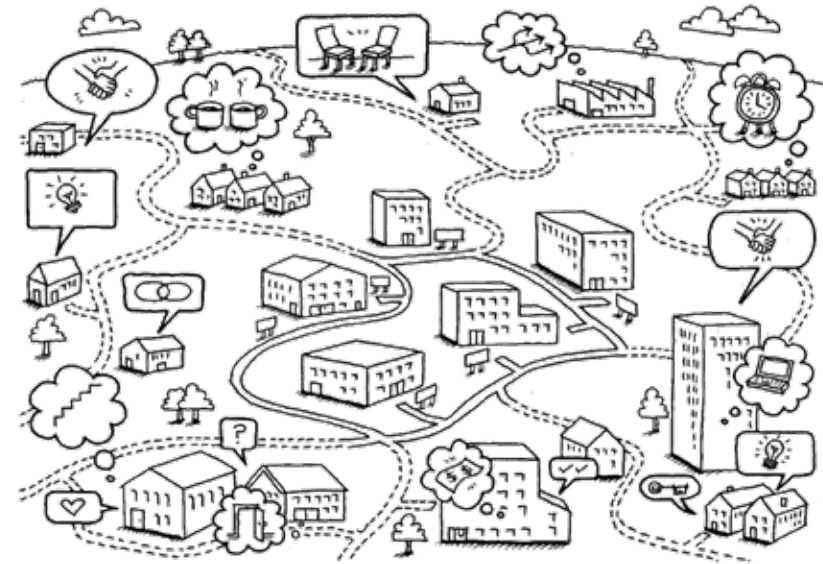
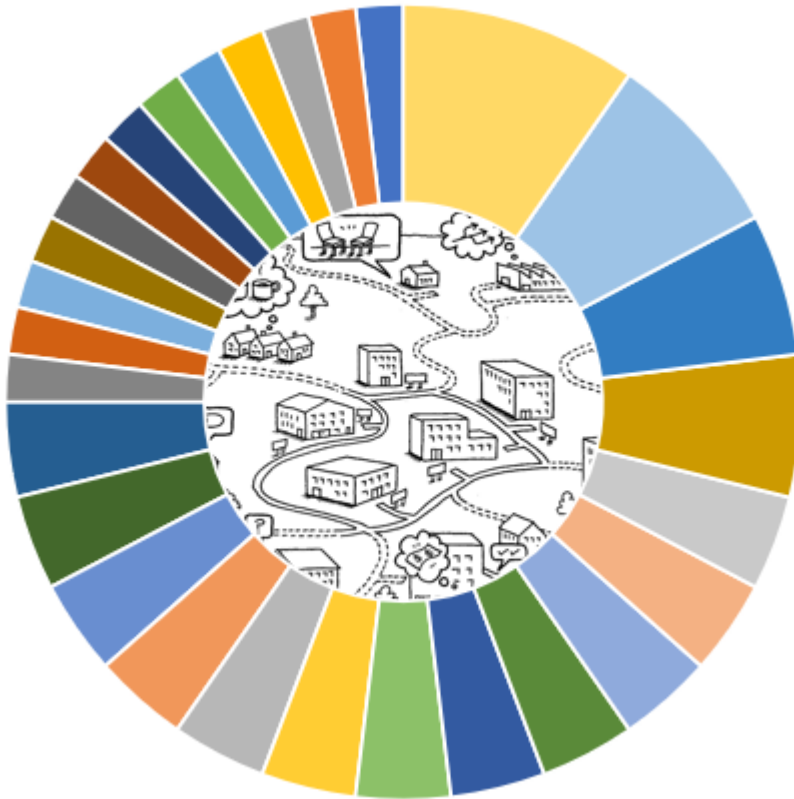


Creating Conversations Guide for host



Every response matters.
Any role. Every industry.



HOW

Planning and communication

1	Select a date & time We suggest afternoons 12:30-4pm so that participants can go home (not straight to their desks/work)
2	Select a venue We suggest something collectively valued by community – Library, Arts, Community Space
3	Select the focus resources Choose 4 from the enclosed list of Insight Exchange resources.
4	Book the Insight Exchange Team Facilitators (via Danielle Allen) & Resources danielle.allen@insightexchange.net <ul style="list-style-type: none">• We will bring a master set of the selected resources for the event (these are kept by IE for future CCs)• We will donate business cards for the focus resources (and all resources) to give to each participant• Where possible we will bring the Voices of Insight Collection for the event.
5	Book Catering We suggest tea/coffee and snack on arrival and/or in mid-session break.
6	Plan who you will invite and how Use the 'Who' list of industries and roles people have wished had access to the materials (This is useful for creating a localised ecosystem not only the service system).
7	Send your invite We suggest personalising each invitation so that you build on relationships before & after the session. We suggest using the PDF template elnitation (simply insert date, time, address and RSVP date/contact)
8	Manage Bookings Plan groups (name sticker on arrival with group allocation to ensure cross-sector groups).

Run sheet

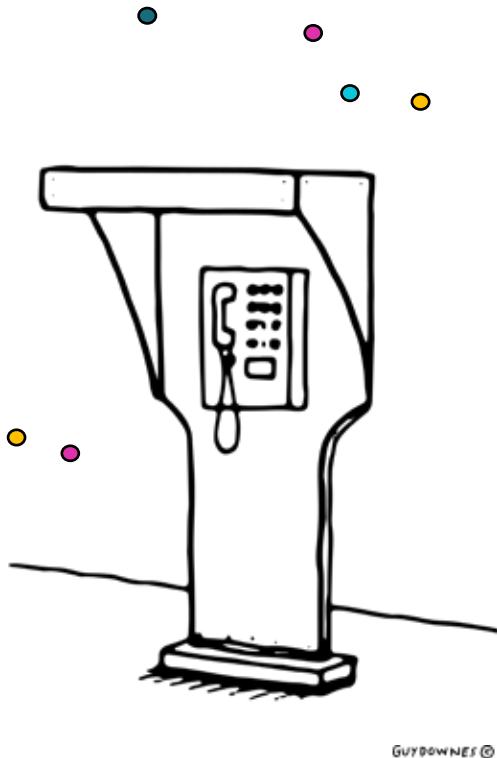
30	Arrival Tea/Coffee and snack Explore the Voices of Insight Collection
15	Open – (Whole Group) <ul style="list-style-type: none">• Acknowledgement of Country• Welcome to guests• Play Seeing Possibilities (6mins) animation• Explain the purpose and rotation of groups
30	Station 1 – Read, reflect, respond
30	Station 2 – Read, reflect, respond
10	Short Break
30	Station 3 – Read, reflect, respond
30	Station 4 – Read, reflect, respond
30	Closing – (Whole group) Invite participants to share reflections overall Play Follow My Lead (4mins) animation

WHO

//

I wish the following sectors, industries, systems of professions accessed the Insight Exchange insights and materials

//



Aged Care Sector
All Sectors Of Society
Allied Health
Ambulance & Paramedics
Antenatal clinic midwives and doctors
Anyone who can hold the perpetrator responsible for their actions
Australian Federal Police
AOD Teams
Carers Services
Centrelink Services
Childcare Centres
Child Protection Services and Systems
Children Services
Churches
Colleges (Independent)
Community Centres
Construction
Corporates
Court Advocates
Corrections Staff
Defence Force
Dentists
Disability Sector
Domestic Violence Workers
Domestic Violence Liaison Officers
Department of Communities and Justice
Education - Schools, Uni, TAFE Etc,
Emergency Department Staff
Factories

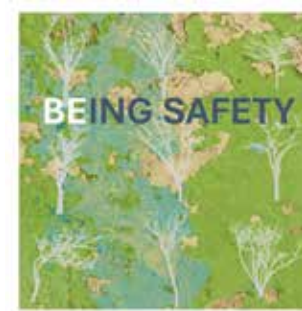
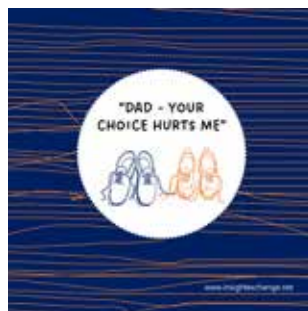
Family Support Services
Family Law Court
Fashion
Fire Fighters
Gamblers Help
General Practitioners (GPs)
Hairdressers & Beauticians
Health Sector
Hotels Airports
Housing Service Providers
Immigration Offices
Lawyers & Family Law Courts
Judicial System
Judges
Legal Aid
LGBTIQ+ Communities
Local Health Districts
Magistrates
Media and Design
Medical Professionals
Medical Centres
Mental Health Services
Midwifery and Antenatal Services
Migrant Resource Centres
Mining Sector
Multicultural Service Providers
NDIS Support Coordinators/Workers
NSW Health
Nurses
Non-Gov Service Providers

Orange Door Staff
PACFA, ACA, APS , ASW - all the Governing Bodies Of Counsellors, Psychologist and Social Workers
Parole Officers
Pediatricians
Paramedics
Police & NSW Police Child Abuse Squad
Policy Makers
Pre-schools Corporate
Prosecutors
Physiotherapists
Religious
Rural and Remote Communities
School Counsellors
Sexual Assault Forensic Medical Examiners
Settlement Services
SHLV Programme Services; Counsellors
Social Media And Media - Developers/Owners
Social Workers & Australian Association Of Social Workers (AASW)
Social Clubs
Sports
Street Outreach Workers
Surgical Departments
Teen Parent Schools
Trades
Transport Services
Vets
Violent Offender Programs, Probation and Parole
Workplaces – Corporate & Government & NGOs
Youth Services

WHAT

Select 4 materials for focus

Click on the image to open the landing page about this resource



Print Copies:

Note: Insight Exchange donates print ready master files for use with a commercial-grade printer however Insight Exchange does not supply or fund print work.

At any time, you can order print copies of the resources

- Get in touch via the [Contact Us](#) page if you would like the print ready files to use with your preferred print supplier.
- If you don't have a preferred print supplier: For your ease, you can make an order via **Corporate Ink** who has a dedicated Insight Exchange artwork order page: www.corporateink.com.au/order (Code: ORDER). Print orders through Corporate Ink for the Insight Exchange stock have been pre-approved by Insight Exchange. All artwork and intellectual content remains the property of Insight Exchange. Any orders and payments for print work are made to Corporate Ink.

Please use the above options in adherence to the guidance about [Using Insight Exchange](#).

In / Out of scope

The central objective of Creating Conversations sessions is to listen to lived/ living expertise of victim-survivors of domestic, family and sexualised violence and abuse through published Insight Exchange materials. The session is intended to and relies on cross-sector participation for this dedicated focus.

Creating Conversations events include these elements:

* These elements are designed to support every participant to play a part and for no one sector or industry to lead, represent or guide local responses

ü	Group size of 30-50 (max participants)
ü	Proportional balance of cross sector participants (see wish list)
ü	4 Insight Exchange resources in focus (pre-select from list)
ü	Opening with <i>Seeing Possibilities</i> animation (6mins)
ü	Closing with <i>Follow My Lead</i> animation (4mins)
ü	Insight Exchange resources (printed) are provided by Insight Exchange for session (for session not distributed)
ü	Set of business cards (with static QR Code) to 14-15 (approx.) IE resources. These are (donated) to every participant, and any spares can be retained and used by the host.
ü	Where possible mobile gallery of the Voices of Insight Collection is included (subject to date and distance)

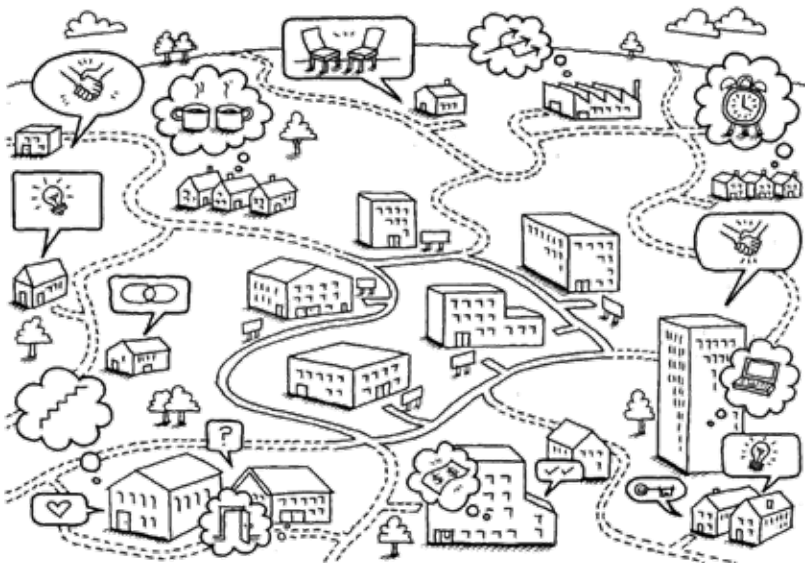
Creating Conversations events exclude these elements:

*Whilst these elements might be important locally, when one or more of these is included, the event is no longer an Insight Exchange Creating Conversations Event.

x	Any fundraising of any kind
x	Any ticket/entrance costs
x	Any fee for any materials
x	Any guest or inhouse speaker talks
x	Any guest or inhouse panel session
x	Market stalls of information, services or initiatives
x	Any merchandise (including commercial and/or service info) in the session or in take home materials.
x	Political, government, council or commercial platform or agendas
x	Announcements of reports, initiatives, grants
x	Skewed proportion of sector participation
x	Use of action plans, minutes or strategies
x	Use of recordings at or about the event

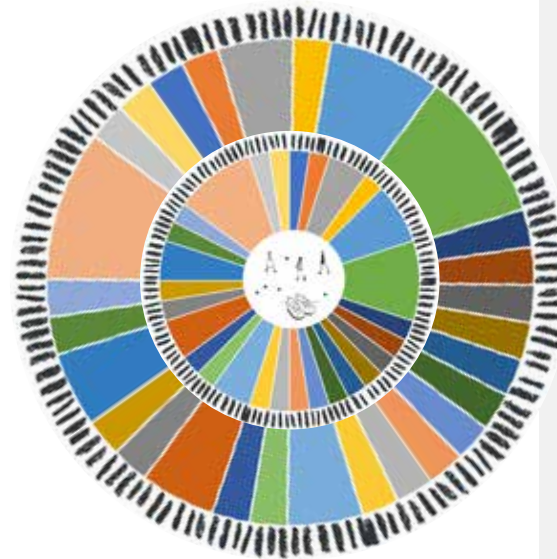
Invitation: Creating Conversations

Victim-survivors of domestic, family and sexualised violence are everywhere. Many don't tell anyone.



Every response matters. Any role. Every industry.

GUY DOWNES ©

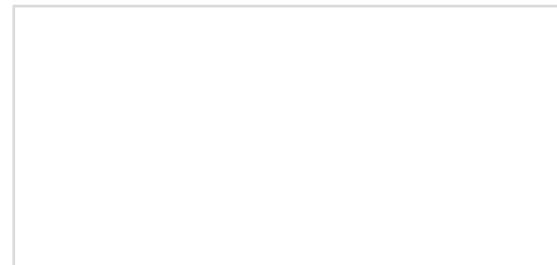


Session Outline:

The session will provide opportunity to participate in cross-sector conversations responding to these ideas and resources.

The session invites all of us to consider responses to people who are silent about, or silenced by, violence and abuse.

RSVP:



Why ecosystem responses matter

People who are perpetrating domestic, family and sexualised violence (DHSV) rely on poor responses from society, services and systems to conceal or excuse their actions and to evade responsibility and consequences.

People using violence and abuse are more able to extend their use of abuse and control when information and communication about DHSV and support options are opaque, unclear or unsafe to access.

People subjected to domestic, family and sexualised violence (DHSV) rely on multiple parts of a complex information and support ecosystem for their safety and wellbeing.

The more disparity there is between different parts of the ecosystem, the tougher and more compromising it is for victim-survivors to access information and to navigate support.

It may be the first, only or last time a victim-survivor of domestic, family and sexualised violence (DHSV) reaches out. Every response matters.

There is no one preference or path for support. Every responder, community and industry matters.

