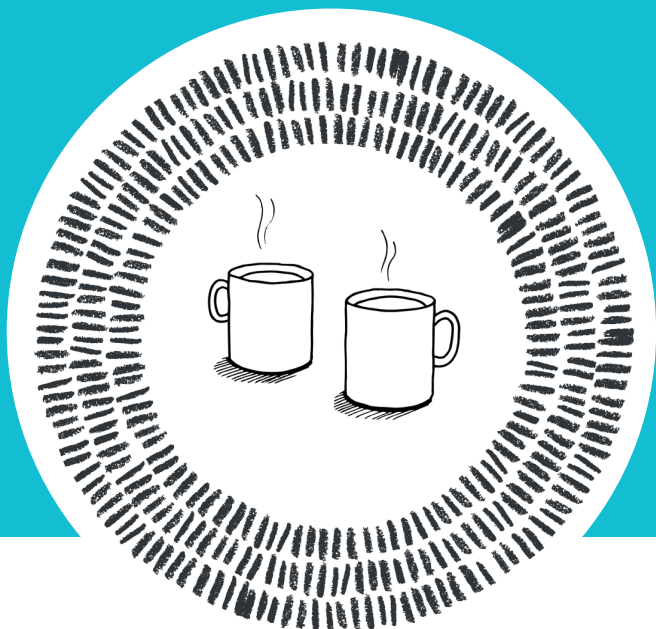


INSIGHT EXCHANGE

Invitation to be a participant

More than 10,000 individuals engage with the ideas, insights and resources on Insight Exchange each year. We invite you to share your (de-identified) lived experience insights to inform and strengthen social, service and system responses to domestic, family and sexualised violence.



INSIGHT EXCHANGE

Scan the QR code above to open

www.insightexchange.net

(Insight Exchange has a quick-exit button)

Read more about the participation experience here:

www.insightexchange.net/be-a-participant/

The interview approach is designed to affirm your dignity, value and learn from your lived-expertise and to support your safety throughout the process.

In the interview we will ask about the ways responses from others were helpful, unhelpful or harmful in upholding your dignity and safety. It is up to you what you choose to share (or not share) – we will *follow your lead*.

Interviews take place (in-person and/or virtually depending on locations) with skilled interviewers in the Insight Exchange team.

If you have questions or want to participate, please contact the Insight Exchange team at contact@insightexchange.net

About the interview process



Insight Exchange acknowledges the Traditional Custodians of the land on which our work and services operate and pay our respects to Elders past and present. We extend this respect to all First Nations peoples across the country and the world. We acknowledge that the sovereignty of this land was never ceded. Always was, always will be Aboriginal land.

Insight Exchange centres on the expertise of people with lived experience of domestic and family violence and gives voices to these experiences. It is designed to inform and strengthen social, service and systemic responses to domestic and family violence. Insight Exchange has been established, developed and is governed by Domestic Violence Service Management (DVSM) a registered charity (ABN 26 165 400 635). All Insight Exchange materials are shared as donated resources without cost barriers for the purpose of informing social, service and systemic responses – the materials cannot be used with a fee applied.



Insight Exchange is for all people. Insight Exchange respects the diversity of all sexualities and gender identities including but not limited to lesbian, gay, bisexual, transgender, queer, intersex and asexual.

Insight Exchange does not provide direct services. Our free digital resources, specifically [‘Follow My Lead’](#), [‘My Safety Kit’](#) and [‘My Dignity’](#) point to support contacts.